



## RECEIVING, CLEANING & OPERATING INSTRUCTIONS

### THANKYOU FOR PURCHASING THE POINT OF USE ASSEMBLY KIT

#### RECEIVING

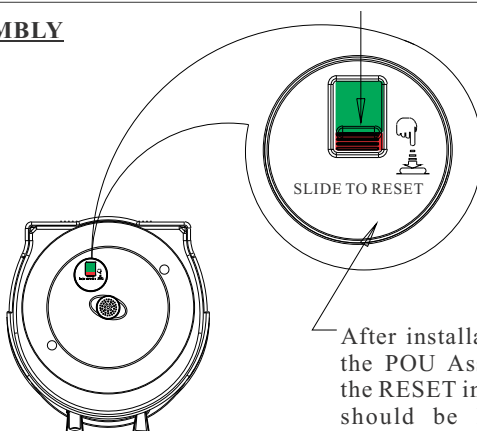
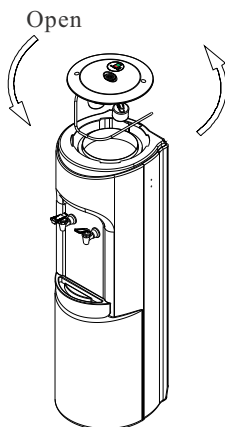
Inspect the box for any evidence of shipping or handling damage. In case of shipping damage, claims should be filed promptly with the carrier.

**Failure to use an appropriate anti-flood device for any reason will not obligate or make Crystal Mountain responsible in any way for Product Liability issues relating to any claims, including water damage claims.**

#### SPECIFICATION OF POU INDICATOR

1. The POU assembly has been designed to fit on Alpine, Mogul, Glacier.
2. The operating pressure 45 PSI.
3. Flow capacity > 1000 ml/min at 45 PSI.
4. Water Inlet Pressure: Minimum 20 PSI (0.138 Mpa) Maximum 80 PSI (0.552 Mpa)  
**Where pressures may exceed 80 PSI (0.552 Mpa) or if installed above the ground floor a Pressure Reducing Valve must be fitted**
5. Indicator function: Indicator will show working valve's failure or any leak from the tubing or fittings inside the reservoir. The bottom float is designated as the primary valve with the top float acting as the safety valve. The top float stops water flow thereby tripping and locking the indicator into the **RED** position.
6. Determine the cause of the failure before resetting the indicator switch to the **GREEN** position.

#### INSTALLATION OF POU ASSEMBLY



After installation of the POU Assembly, the RESET indicator should be located towards the rear of the cooler

Figure 1

1. Remove POU Assembly from kit box – kit includes POU assembly, POU Cover, baffle disc and instructions.
2. Ensure that both floats are positioned downwards.
3. Remove the existing lid by turning counter clockwise and lifting off.
4. If applicable, remove the DryGuard™ Inner Cone by pulling upwards.
5. Install the POU assembly onto the cooler as per Figure 1. Position tubing so that it exits from the rear of the cooler as per Figure 2.

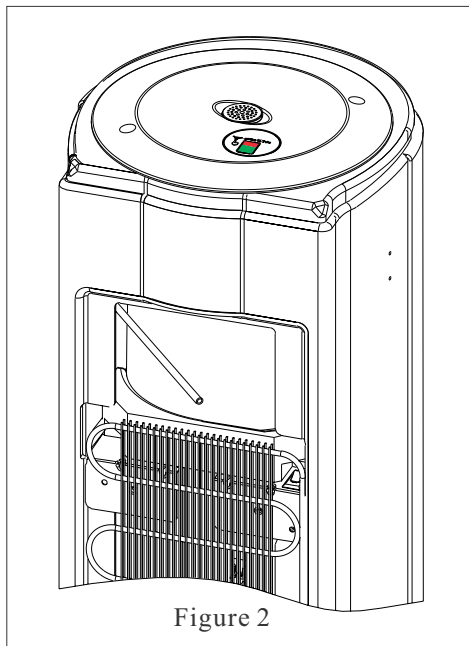


Figure 2

6. Customer to use an applicable 1/4" connector to be positioned between the POU tubing inlet and the water source.
7. For those coolers with baffle cup (part # PLC-C000197 located on the underside of the cup), the baffle cup has to be replaced with baffle disc (part # PLC-C000073) provided.

NOTE: Plastic clips may be used to secure any excess 1/4" tubing to the top part of the condenser.

### **CHECK INDICATOR**

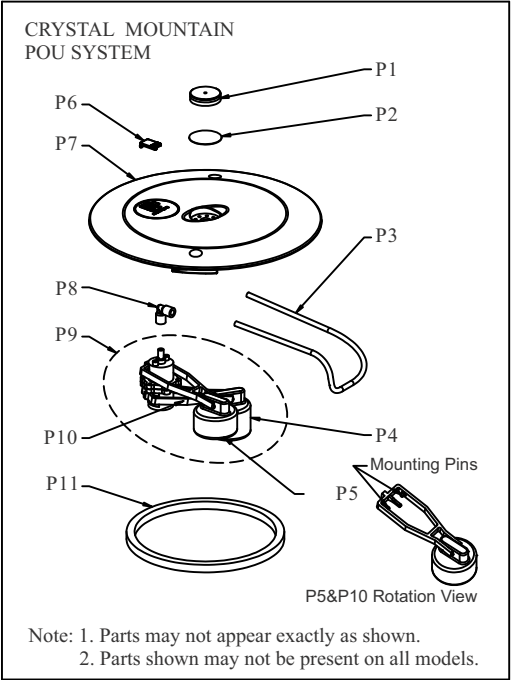
If indicator shows **RED**, slide the lever forward to reset the indicator back to **GREEN**. Ensure that indicator is in the **GREEN** position after installation is complete.

### **CLEANING**

Prior to installation and for periodic cleaning, rinse the POU Assembly with water and a mild dishwashing liquid detergent. **DO NOT USE** bleach or abrasive cleaners.

**STRUCTURE AND PARTS**

See Figure 3



**PARTS LIST**

No.	DESCRIPTION		PART CODE
P	P1	INDICATOR ASSM-FILTER CAP	PLC-C100056(WH) PLC-C100332(BK)
	P2	CG/POU FILTER PAPER	MIS-C100049
	P3	1/4" TUBING FOR POU SYSTEMS	SIL-C000019
	P4	POU VALVE ASSM-FLOATER	PLC-C000150
	P5	POU VALVE ASSM-FLOATER - Short	PLC-C100195
	P6	INDICATOR ASSM-CLEAR WINDOW	SIL-C100010
	P7	INDICATOR ASSM-LID	PLC-C100057(WH) PLC-C100331(BK)
	P8	1/4" POU PLASTIC ELBOWS	MIS-C000044
	P9	POU FLOAT ASSEMBLY	MIS-C000043
	P10	POU VALVE ASSEMBLY- ARM	PLC-C000149
	P11	GASKET, POU LID	SIL-C000026
BOXED,POU ASSEMBLY (NO COVER)			
		BOXED,POU ASSEMBLY,WHITE (NO COVER)	SUB-C100263
		BOXED,POU ASSEMBLY,BLACK (NO COVER)	SUB-C100287
BOXED,POU COVER			
	A	GLACIER POU COVER - WHT	SUB-C100108
	B	GLACIER POU COVER - BLACK	SUB-C100190
	C	MOGUL POU COVER - WHT	SUB-C100106
BOXED,POU ASSEMBLY+BAFFLE DISK+COVER			
		BOXED, POU ASSEMBLY + WHT GLACIER COVER	SUB-C100007
		BOXED, POU ASSEMBLY + BLACK GLACIER COVER	SUB-C100175
		BOXED, POU ASSEMBLY + WHITE MOGUL COVER	SUB-C100092

# CRYSTAL MOUNTAIN LIMITED WARRANTY

Crystal Mountain warranties the POU Assembly Kit against defects and workmanship under normal use, when installed and operated in accordance with the installation instructions.

One (1) year from the date of sale, Crystal Mountain at their option, will repair or replace any defective parts, during this period.

This warranty does not cover any damage due to accident, freight damage, misuse, abuse, and negligence; fouling of components due to liming, dirt, unsatisfactory water conditions or faulty plumbing. Crystal Mountain does not accept responsibility for personal injury resulting from misuse of equipment.

Unauthorized service work and finish deterioration due to normal use cannot be claimed under this warranty.

The customer acknowledges that water, like other liquids, can cause damage to property and surfaces. The customer takes full responsibility for placing the cooler within a residence, business or other location, and acknowledges that failure to address drips, leaks or spillages is at the customer's risk.

**Failure to use an appropriate anti-flood device for any reason will not obligate or make Crystal Mountain responsible in any way for Product Liability issues relating to any claims, including water damage claims.**



## Crystal Mountain Products Limited

**North American Sales Office**  
200 Carnegie Drive, Suite 234  
St. Albert, AB, T8N 5A7 Canada  
E-Mail: [sales@crystalcoolers.com](mailto:sales@crystalcoolers.com)

**European Sales Office**  
Fence House, Fence Avenue  
Macclesfield, Cheshire  
United Kingdom SK10 1LT  
Email: [cmeurope@crystalcoolers.com](mailto:cmeurope@crystalcoolers.com)

## Crystal Mountain International Limited

**Hong Kong Office**  
Room 610  
Winfield Commercial Building 6-8a  
Prat Avenue, Tsimshatsui  
Kowloon, Hong Kong  
E-mail: [cmasia@crystalcoolers.com](mailto:cmasia@crystalcoolers.com)